

# Grandstream Networks, Inc.

---

GXV3275

IP Multimedia Phone for Android™

## GUI Customization Guide



## Table of Contents

<b>INTRODUCTION.....</b>	<b>4</b>
<b>GXV3275 LCD GUI CUSTOMIZATION STEPS.....</b>	<b>5</b>
<b>CONFIGURATION GUIDE.....</b>	<b>6</b>
App Settings .....	6
Add 3 <sup>rd</sup> Party Applications .....	7
Layout Settings .....	8
Contacts Settings .....	9
Screen Settings .....	10
Screensaver Settings .....	11
Language and Keyboard Settings .....	12
Taskbar Settings .....	13
Widget Settings .....	14



## Table of figures

Figure 1: App Settings page.....	6
Figure 2: Add 3 <sup>rd</sup> Party Application Settings.....	7
Figure 3: Layout Settings Page.....	8
Figure 4: Contacts Settings Page .....	9
Figure 5: Screen Settings Page .....	10
Figure 6: Screensaver Settings Page .....	11
Figure 7: Language Settings Page .....	12
Figure 8: Taskbar Settings Page.....	13
Figure 9: Widget Settings Page .....	14



## INTRODUCTION

Grandstream GXV3275 IP Multimedia Phone allows users to customize the GUI desktop layout as well as GUI configurations on the phone, offering users with flexibility and control. The GUI configuration includes display/hide certain applications, configure parameters on the phone with specific configuration items, control the display appearance and enable/disable some applications and much more.

This document describes how to use the Grandstream Graphical GUI Customization Tool to customize the GXV3275 GUI settings and applications. This tool allows users to do the following on applications running on GXV3275:

- Turn on/off applications
- Set up parameters
- Personalize phone display
- Turn on/off certain functions on applications

The Grandstream Graphical GUI Customization Tool is available for download from the following link:

<http://www.grandstream.com/support/tools>



## GXV3275 LCD GUI CUSTOMIZATION STEPS

1. Unzip the tool package. Double click on “gui\_config\_tool.exe” to start up the tool. Single click on GXV3275 picture to get into the GXV3275 GUI customization interface.
2. Set up the parameters and application configurations.
3. Generate the GXV3275 custom file “GXV3275cust” by clicking on “File” → “Save As”. The tool also allows users to read and edit the existing custom files.
4. Put the generated custom file “GXV3275cust” on your HTTP/TFTP/HTTPS server.
5. Point the phone's configuration file path to the directory on the server where the custom file locates.
6. Reboot the phone to trigger the upgrade.
7. After booting up, GXV3275 LCD shall display the customized GUI.



# CONFIGURATION GUIDE

## App Settings

Under the GXV3275 VOIP Phone Config tool interface → App Settings, the user has the ability to manage and customize everything about the applications pre-installed on the GXV3275. See the following figure.

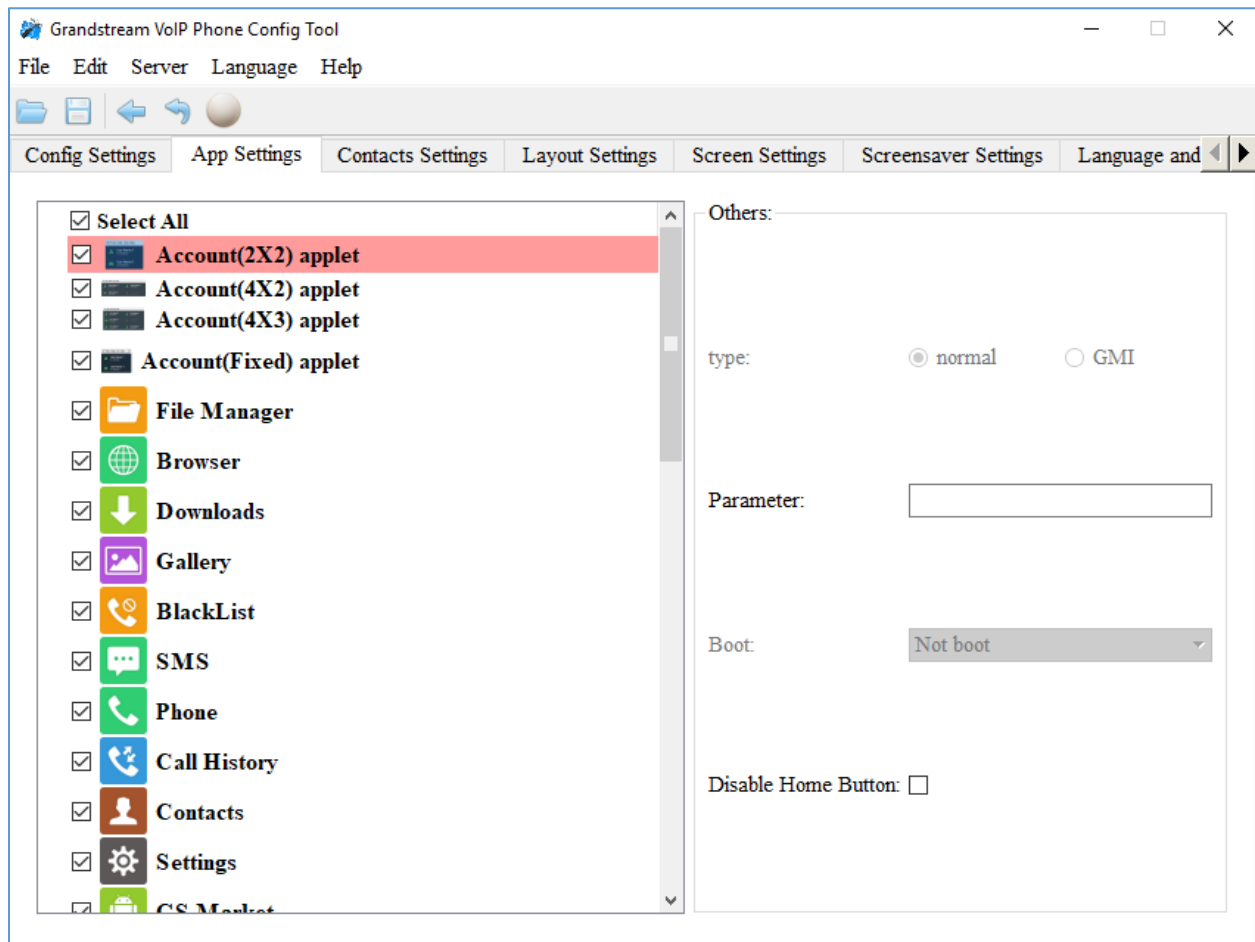


Figure 1: App Settings page

In this section, users could configure the following:

- Edit menu layout structure
- Enable or disable specific application
- Edit options to be displayed on GUI interface for a specific application, which includes icon and text for description purpose (Default settings will be applied if there is no change made)
- Add submenu or link by right-clicking on the left panel list.

**Note:** On the left panel, “Phone”, “Settings” and “Call History” are mandatory.



## Add 3<sup>rd</sup> Party Applications

To add a 3<sup>rd</sup> party application, with the cursor located within the left panel, right-click the mouse, a drop-down menu will appear, with two options “add submenu” and “add3rdApp”.

Click on “add3rdApp”, a pop-up window “Add Third Party Application” will be shown. See *the following figure*. Browse and select an “icon” and an “apk”, enter a “Display Name”, and click on “Add”.

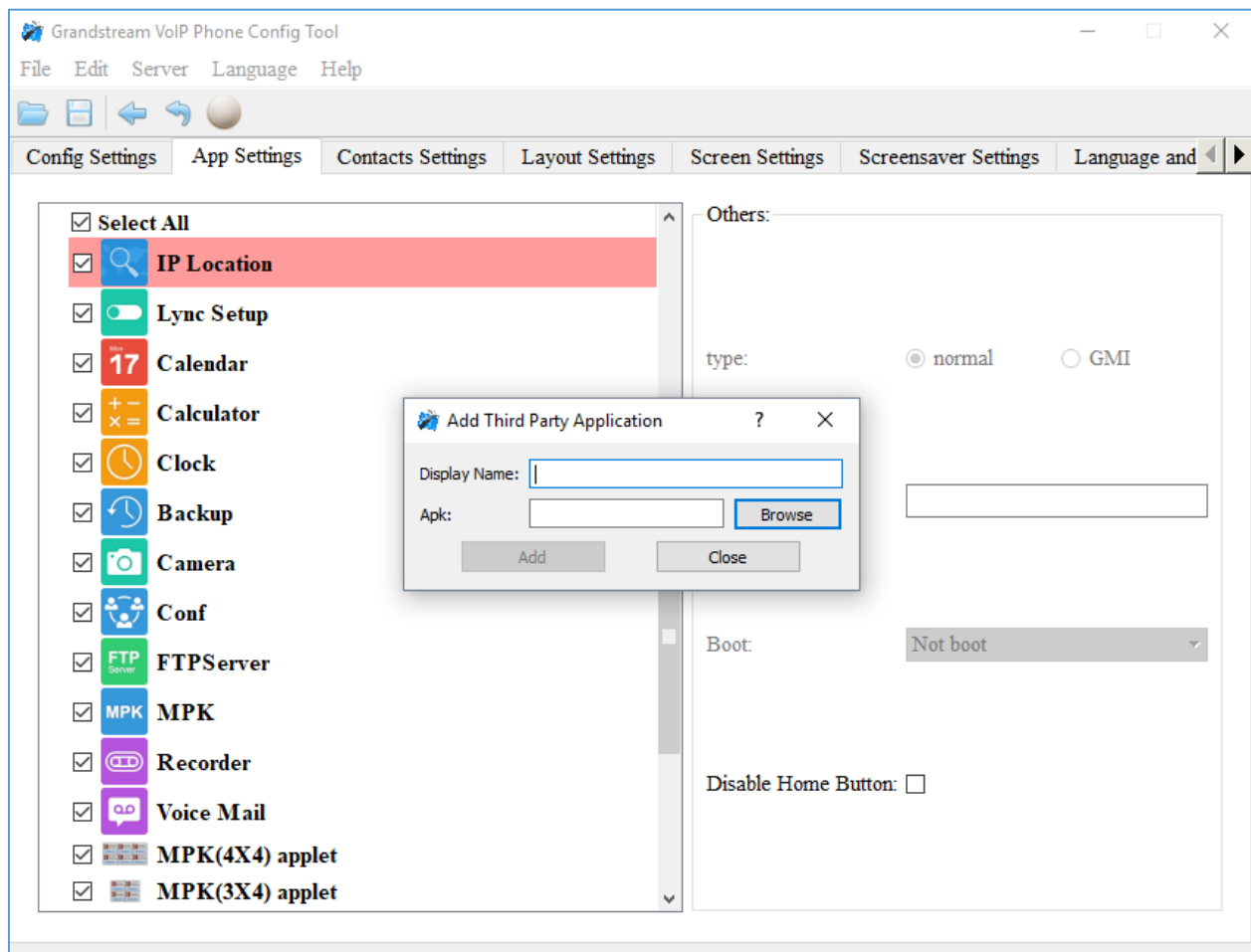


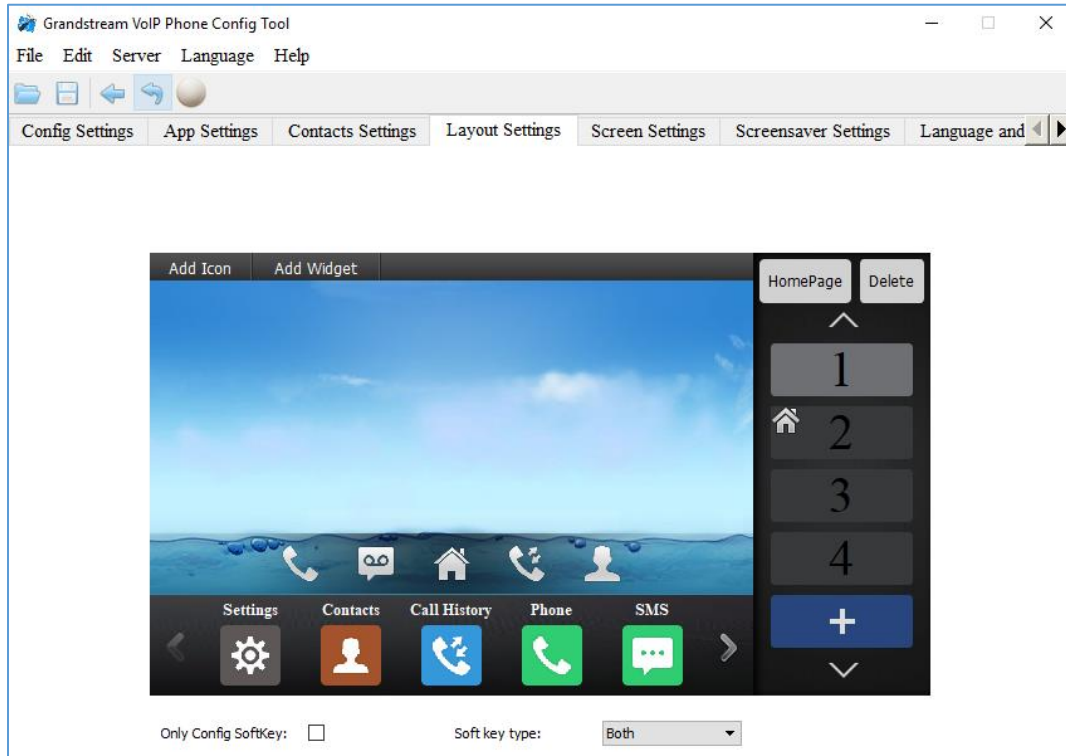
Figure 2: Add 3<sup>rd</sup> Party Application Settings

A third-party application with the icon and display name shows up in the left panel.



## Layout Settings

This settings page gives the admin the ability to set the graphic design he wants by changing and modifying the visual structure of the GXV3275 user interface. *See the following figure.*



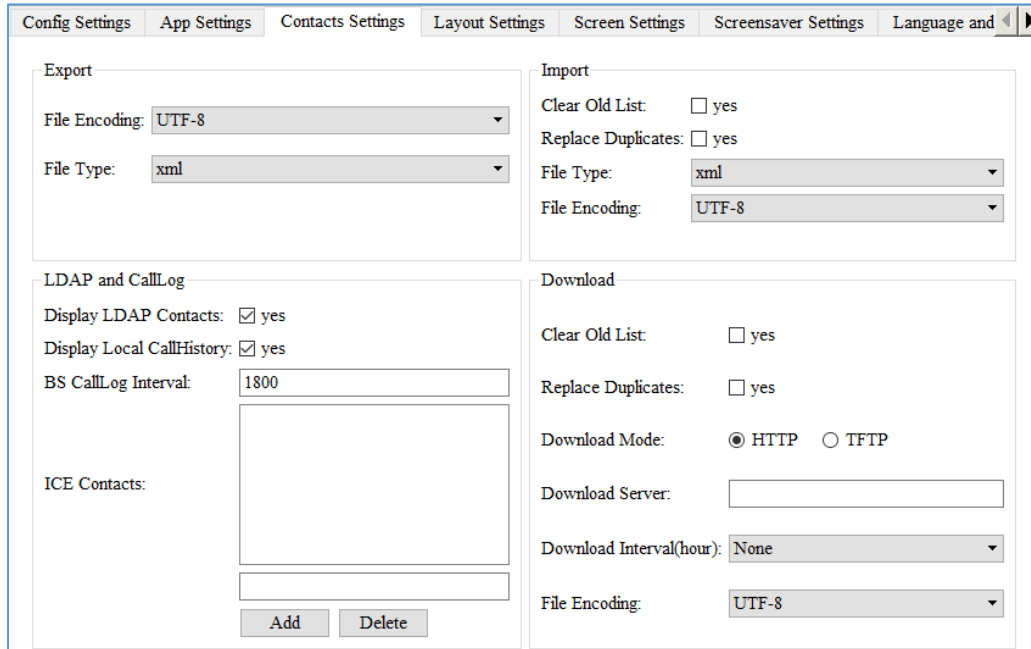
**Figure 3: Layout Settings Page**





## Contacts Settings

The "Contacts Settings" section on the Config Tool, as can be seen, provides the parameters for Contacts Export/Import, LDAP and phonebook download for the GXV3275.



Section	Parameter	Value
Export	File Encoding	UTF-8
	File Type	xml
Import	Clear Old List	<input type="checkbox"/> yes
	Replace Duplicates	<input type="checkbox"/> yes
	File Type	xml
Import	File Encoding	UTF-8
	Display LDAP Contacts	<input checked="" type="checkbox"/> yes
LDAP and CallLog	Display Local CallHistory	<input checked="" type="checkbox"/> yes
	BS CallLog Interval	1800
Download	Clear Old List	<input type="checkbox"/> yes
	Replace Duplicates	<input type="checkbox"/> yes
Download	Download Mode	<input checked="" type="radio"/> HTTP <input type="radio"/> TFTP
	Download Server	
Download	Download Interval(hour)	None
	File Encoding	UTF-8

**Figure 4: Contacts Settings Page**



## Screen Settings

In the Screen Settings page, the admin can select screen image from the available ones or import it by clicking on “Select image”.

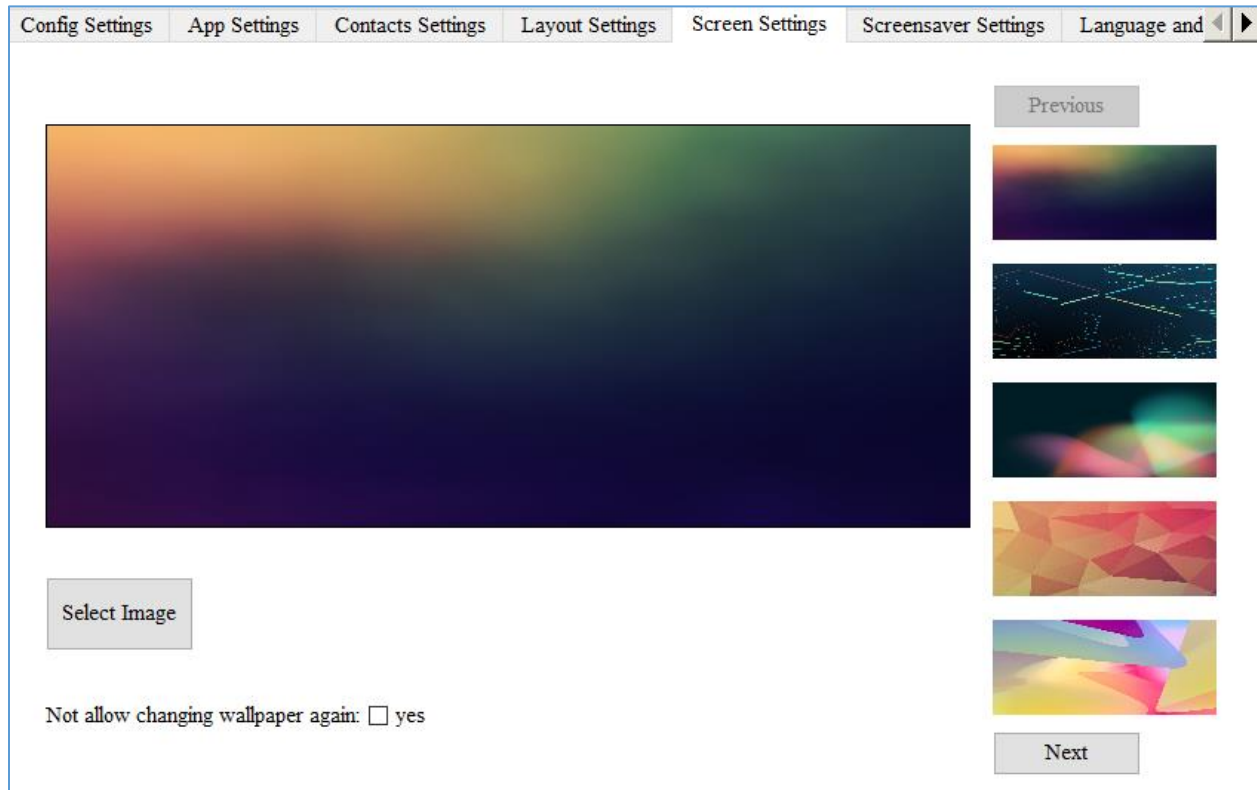


Figure 5: Screen Settings Page

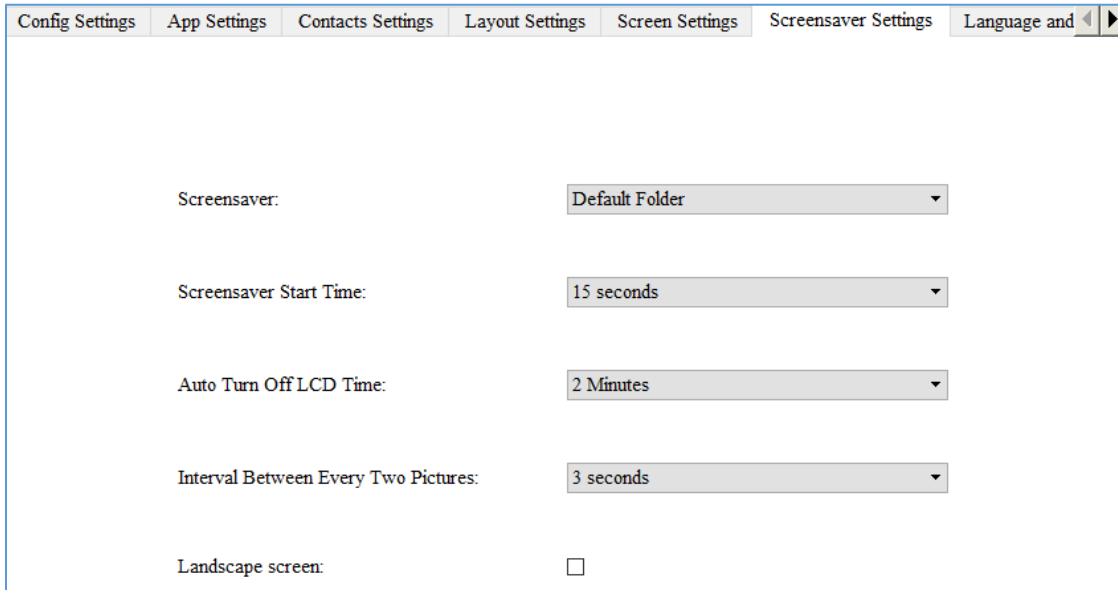
### Note:

To prevent the user from changing the background image on the device, admin firstly needs to uncheck “Gallery” in the App Settings Page and then, check “Not allow changing wallpaper again” option in the Screen Settings Page.



## Screensaver Settings

This is the page where to configure screensaver parameters, such as the source of the screensaver (Default, local or from internet), screensaver start time, Turn off LCD Time, Interval between pictures, and Landscape screen. See following figure.



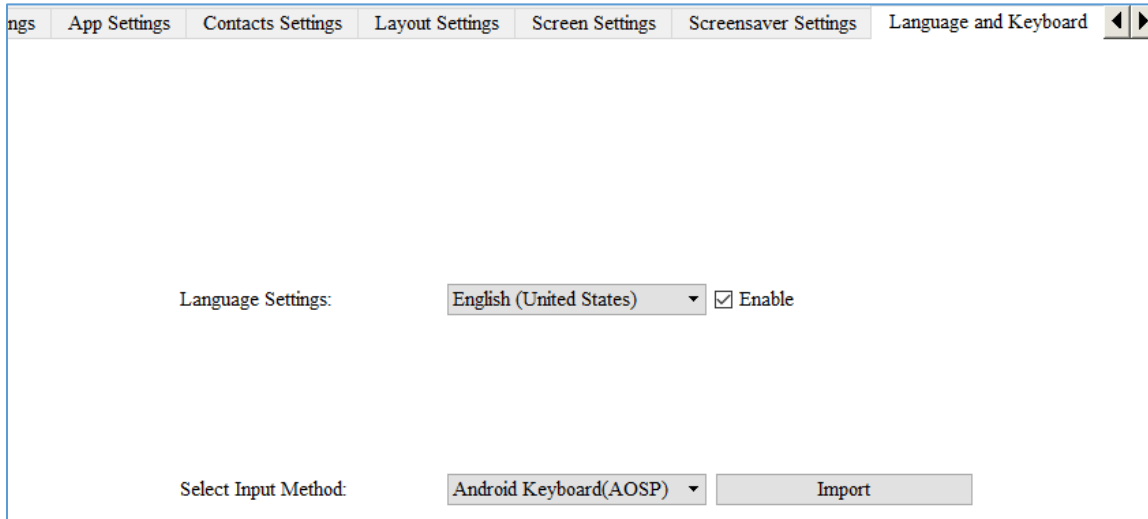
Config Settings	App Settings	Contacts Settings	Layout Settings	Screen Settings	Screensaver Settings	Language and
Screensaver:		Default Folder		▼		
Screensaver Start Time:		15 seconds		▼		
Auto Turn Off LCD Time:		2 Minutes		▼		
Interval Between Every Two Pictures:		3 seconds		▼		
Landscape screen:		<input type="checkbox"/>				

Figure 6: Screensaver Settings Page



## Language and Keyboard Settings

This page is for choosing the phone's display language among 40 languages available under "Language Settings". The admin has also two Keyboard choices: "Android Keyboard(AOSP)" or "Google Pinyin IME" available under "Select Input Method".



Settings App Settings Contacts Settings Layout Settings Screen Settings Screensaver Settings Language and Keyboard

Language Settings: English (United States)  Enable

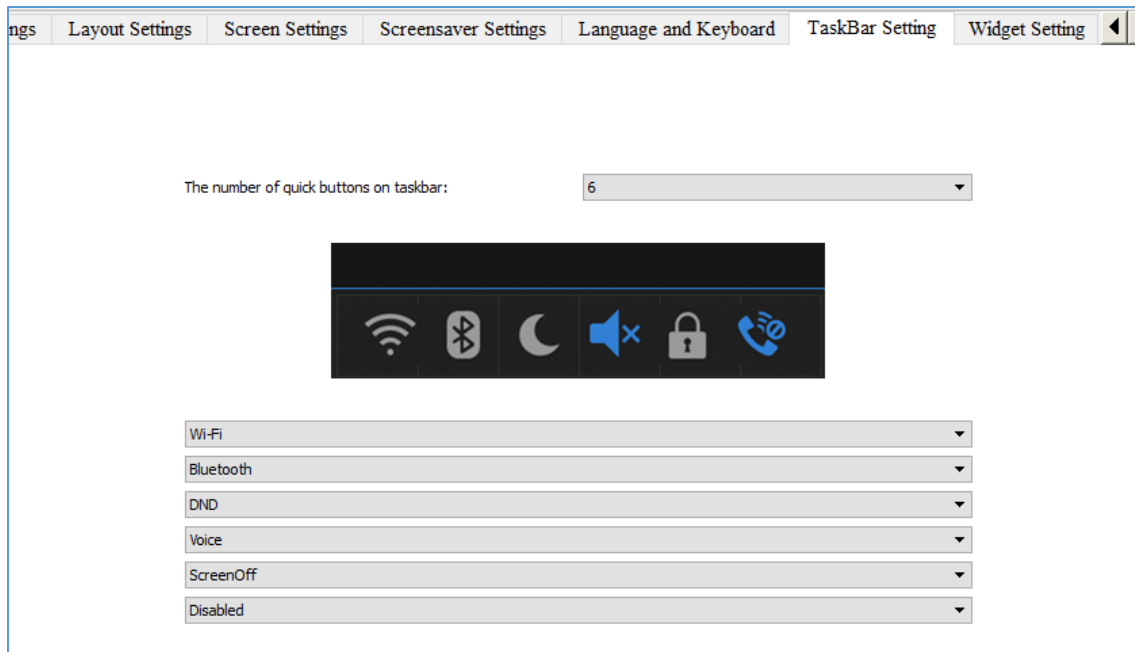
Select Input Method: Android Keyboard(AOSP) Import

Figure 7: Language Settings Page



## Taskbar Settings

Admin can customize the taskbar in the edge of the screen by choosing the useful programs and applications and their number in order to allow the user to run multiple programs and quickly switch among them by clicking the appropriate icon on the taskbar. See following figure.



**Figure 8: Taskbar Settings Page**



## Widget Settings

Widget Settings page is where the admin can adjust DTMF Softkeys parameters, make the IP Address visible to the user, and define the widgets he wants to show in the status bar.

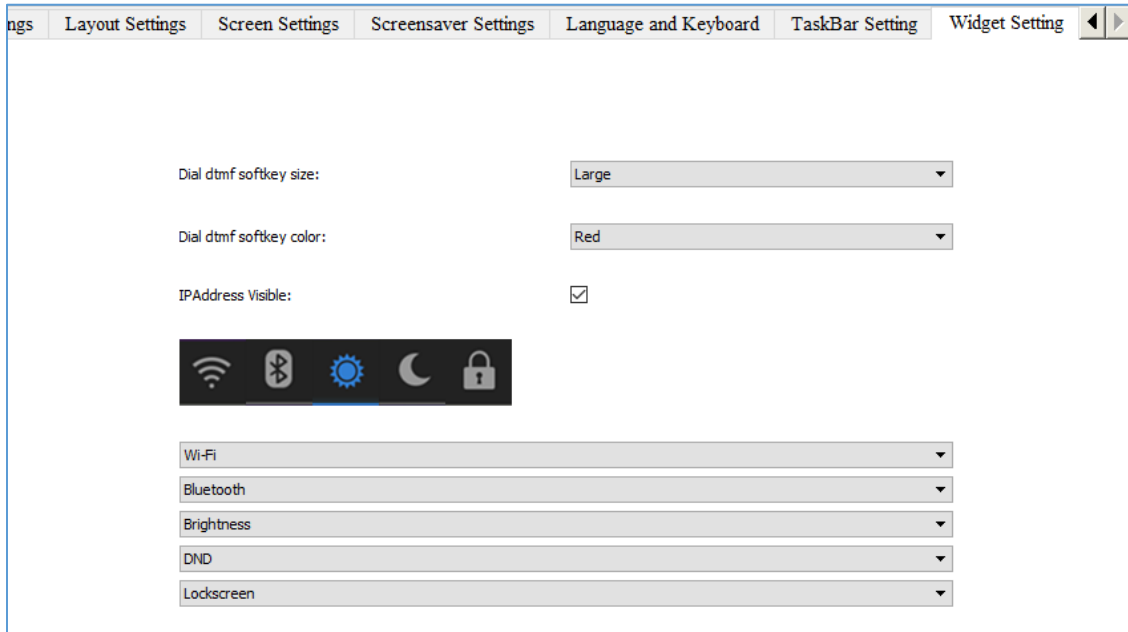


Figure 9: Widget Settings Page

